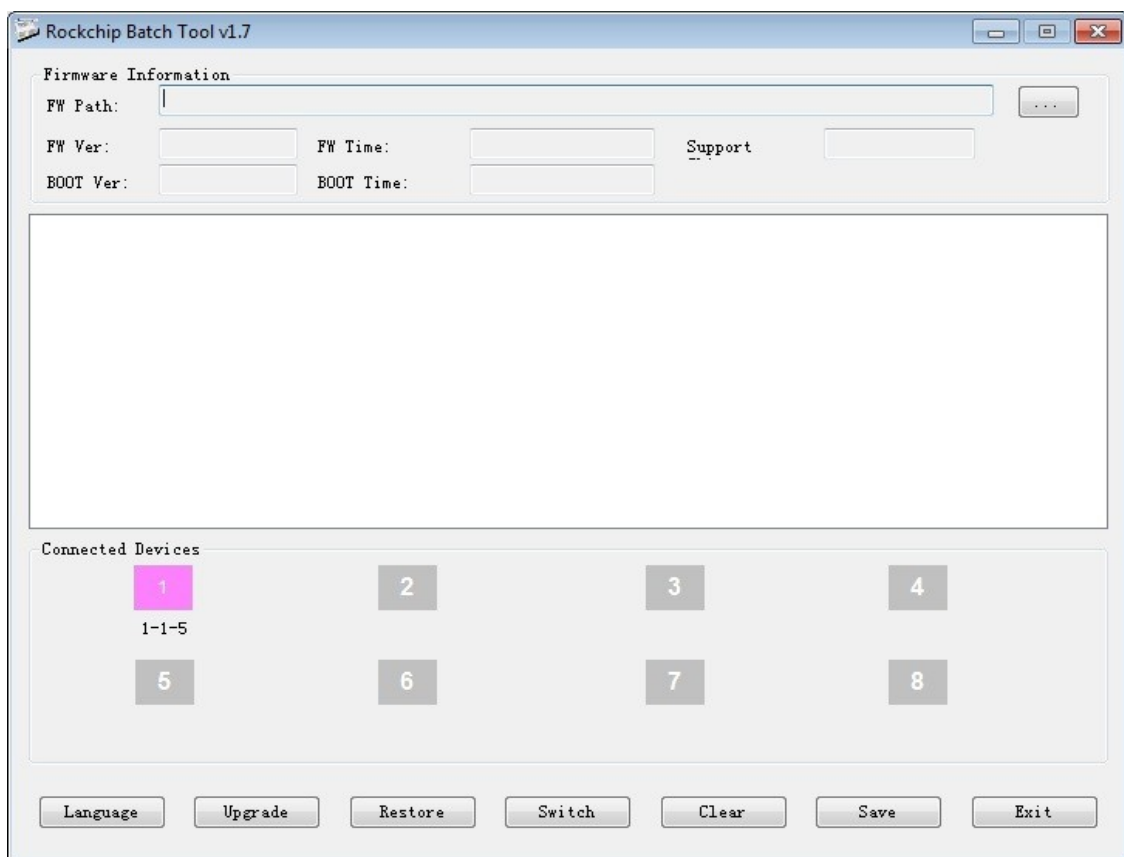
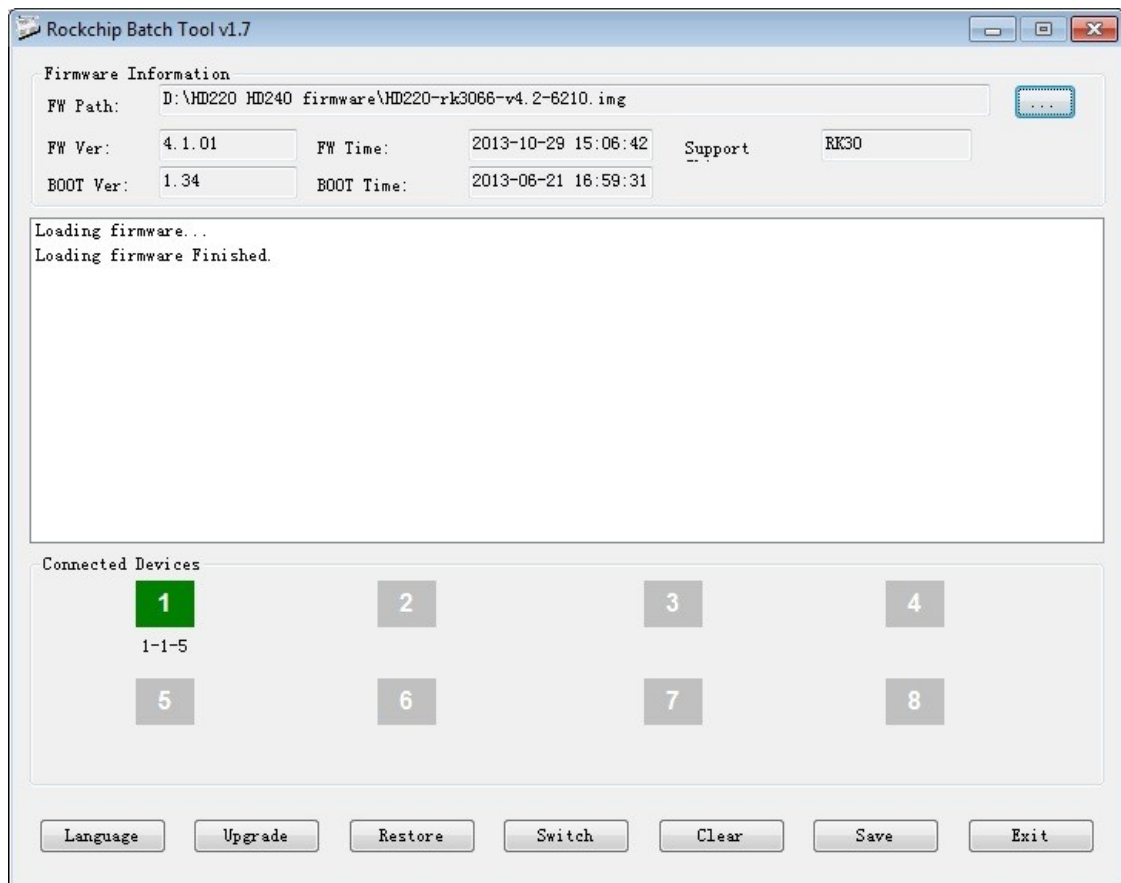


1. Download the archive with firmware and unpack it.
2. Connect the SmartTV device to a TV set or monitor.
3. Connect an external power adapter to the DC socket.
4. Connect the device with a computer using a USB port (additional micro USB – USB cable may be needed)
5. In the SmartTV settings check an option 'Connect to PC'  
(Settings → USB → Connect To PC)
6. Drivers attached to the firmware should be installed in order to properly recognize the device in Windows system.  
(Start → Control Panel → Administrative tools → Computer management → Device manager).  
On the newly recognized device click „update driver” and choose proper driver from „driver” folder according to version of your system:  
For Windows 32bit x86—32  
For Windows 64bit x64—64
7. Execute the Rockchip batch Tool program from directory BatchTool
8. If in section Connected Devices a device box is highlighted in pink, use the option Switch, which will cause the box to turn green and indicate readiness of the device.



9. Choose file with proper firmware.



To update the firmware, click the Upgrade button.

